



Q5

Audi Q5 accessories

Audi
Genuine Accessories





What sets both you and the Audi Q5 apart: individuality.

The real strength of the Audi Q5 lies in its flexibility. The vehicle adapts to your every need. However, because we cannot tell exactly what you have in mind, we provide you with Audi Genuine Accessories so that you can customise your Audi Q5 to meet your own expectations.

Page

Accessories

- 4 Sport and design
- 10 Transport
- 18 Communication
- 22 Family
- 26 Comfort and protection
- 34 Other communication materials

We may not have reinvented the wheel, although given the numerous tests you might almost believe that we have.

The day-to-day use of cast aluminium wheels subjects them to constant pressure. Extensive tests ensure that the wheels nevertheless fulfil the stringent quality requirements. The time-consuming casting process also ensures high component strength. And the sophisticated multi-layer paintwork not only gives the vehicle its brilliant look but also provides effective protection against scratches.






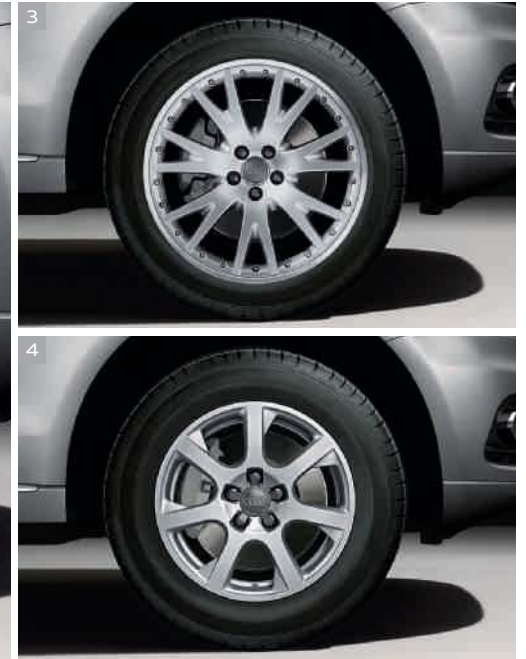
1 Cast aluminium wheels in 10-spoke design, Anthracite, high-gloss turned finish^{1,2}
Elegant design with high-shine spokes. In dimensions 8.5 J x 20 for 255/45 R 20 tyres.

2 Cast aluminium wheels in 10-spoke design, Silver¹
Available in dimensions 8.5 J x 20 for 255/45 R 20 tyres.



3 Cast aluminium wheels in 7-V design, two-piece¹
In dimensions 8.5 J x 20 for 255/45 R 20 tyres.

4 Forged aluminium winter wheels in 7-spoke design
Complete winter wheel suitable for use with snow chains in dimensions 7 J x 17 for 235/65 R 17 tyres. Fuel efficiency class: F, wet grip class: C, external rolling noise class:  72 dB.



Audi Genuine tyres
Specially developed for each corresponding Audi model using the very latest materials. Tested in approx. 50 testing procedures. The standards applied during testing are considerably more stringent than the statutory regulations. When additionally purchasing summer tyres or when fitting winter tyres, Audi Genuine tyres are able to ensure the usual Audi quality.

Snow chains
For better hold on snow and ice. Available in a range of sizes.



Learn how to fit the snow chains quickly. Simply scan the QR code using your smartphone or open the following link in your browser: www.audi.com/snowchains. Connection costs depend on your mobile contract.

¹ Can only be used in conjunction with the optional wheel arch covers.

² Please note the following information relating to wheel rims: polished or part-polished aluminium wheels must not be used in wintry road conditions.

Due to the manufacturing process, the rim surfaces do not possess sufficient anti-corrosion protection and are at risk of long-term damage due to road salt or similar materials.

1 Valve caps

The four metal valve caps with embossed Audi logo provide better protection for the valve against dust, dirt and moisture. Available for rubber, metal and aluminium valves.

2 Anti-theft wheel bolts

These bolts can only be removed using the special adapter provided on delivery, making theft more difficult.

3 LED for entry area, quattro*

For a bright entrance. When the vehicle doors are opened, an LED light projects the quattro logo onto the ground. Available in a two-part set for the driver and front-passenger side or for the rear vehicle doors. Requirement: the lighting package that is available as an option ex works.

Upgrade kit for LED interior lights

For replacing existing halogen interior lights with LED illuminants; suitable for components such as the lighting in the luggage compartment, the glove compartment and the vanity mirror. Available as a four-part set.

quattro film set

The “quattro” lettering as a film set for the rear section of the vehicle on both sides. Available in either Brilliant Black or Ice Silver, metallic, depending on the exterior vehicle colour.

High-tech gecko film set

Adds a unique touch, not only to your vehicle but also to many other surfaces. Available in two sizes: 20 x 15 cm and 40 x 30 cm.

Wheel bags

A four-part set with convenient handles for easy and clean transport and storage of complete wheels. Made from tear-resistant plastic. Wheel bolts can be stored in the outside pockets.

*Speak to your Audi partner for more precise information on the launch date for this product.



Beauty knows no pain.

Topic: quality

Cast aluminium wheels

Copper accelerated acetic acid salt spray tests, for example. When our experts test the quality of Audi Genuine Accessories wheels, they are just as innovative as our designers are. Extreme heat, high humidity, intense sunlight – the number of possible tests is practically limitless. However, the most extreme durability test is the copper-accelerated acid salt spray test, CASS for short. This test involves spraying wheels that have already been damaged by simulated stone chips with this extremely corrosive solution for several days. In spite of this, the wheels must pass all these challenges without any visible damage. This means that you will continue to enjoy the design of your Audi Genuine Accessories wheels just as much as you did on the first day, even after many kilometres.

Look good on any road. Even when there aren't any roads.

The offroad style package emphasises both the athleticism and the offroad qualities of the Audi Q5. Fascinating accents give your Audi Q5 an even more robust and sporty look, making it almost too attractive to take off road.







4

1 Front bumper

Consisting of a bumper cover painted in the vehicle colour, a radiator grille with vertical chrome bars, a metallic stone grey spoiler and stainless steel skid plate.

2 Door cover strips

Painted in metallic stone grey. Reduce damage, for example from stone chipping.

3 Wheel arch extensions

Painted in metallic stone grey. Emphasise the distinctive vehicle styling and protect the body contour.

4 Rear bumper

The metallic stone grey painted rear apron emphasises the dynamic rear section of the Audi Q5 and protects the rear underside of the vehicle with a stainless steel skid plate.

5 Running boards

Made from stainless steel. These products make it easier to load ski and luggage boxes on the roof. Rubber pads protect against the risk of slipping. Load capacity of 200 kg each.

6 LED tail lights, clear glass

Impressive design: transparent cover disc, set into black housing. Halogen tail light clusters can also be retrofitted at any time. Long service life due to LED technology.

Foot rest and pedal caps in stainless steel

Dazzling and practical at the same time: The foot rest and pedal caps are made from brushed stainless steel. The rubber coating on the surface provides better grip. Available for automatic and manual gearboxes.



5



6

There is plenty of room in the Audi Q5. But some people just can't get enough.

1,560 litres of cargo space really should be sufficient. However when it comes to transporting bulky items, Audi Genuine Accessories offers practical and attractive solutions. So you really can pack everything you want.



1 Bicycle fork mount

Easy to use. Lockable. Suitable for bicycles with quick-release front wheel. Maximum load capacity: 17 kg. Can only be used in conjunction with the roof rack provided as standard for the Audi Q5.

Front wheel holder

Made from anodised matt aluminium, mounted with anti-theft screws, completely pre-assembled. Not suitable for bicycles with a half axle. Can only be used in conjunction with the bicycle fork mount.



2 Bicycle rack

Made from a specially shaped aluminium profile and powder-coated steel. Ensures that the wheel can be mounted particularly simply. Lockable. Maximum load capacity: 17 kg. Can only be used in conjunction with the roof rack provided as standard for the Audi Q5.

3 Bicycle carrier for the trailer towing hitch

Bicycle carrier (also suitable for electric bikes) for up to two bicycles with a maximum load capacity of 60 kg.* The same key can be used both to lock bikes onto the carrier and to lock the carrier onto the vehicle separately. Moveable wheel restraints provide a secure hold. Easy access to the luggage compartment is achieved by way of a folding mechanism. The bicycle carrier can be folded up and conveniently stored in the bag provided, thereby saving space. An extension kit for a third bicycle is also available as an option.

*Please note the information regarding the maximum permissible trailer load and the gross vehicle weight rating of your vehicle in the vehicle wallet.





1 Luggage rack

For the easy transportation of extra luggage on the roof. Lockable. The profile is made from anodised aluminium. Non-corrosive. Maximum permissible load: 56 kg. Can only be used in conjunction with the roof rack provided as standard for the Audi Q5.



2 Roof carrier bag

For storage or transport of a carrier unit and smaller roof rack modules. Made from durable material, with multiple loops and a side pocket for suitable tools or small parts.



3 Trailer towing hitch

Mechanically swivelling trailer towing hitch. The ball hitch under the vehicle can be swivelled out for use and swivelled back in when not in use. Includes a 13-pin socket, which is integrated into the ball hitch for easy access.





1 Kayak rack

For single kayaks weighing up to 45 kg. Can be tilted for easy loading and unloading. The kayak rack and elasticated belt can be secured separately. Can only be used in conjunction with the roof rack provided as standard for the Audi Q5.

2 Ski and snowboard rack

To transport up to six pairs of skis or four snowboards easily. Lockable. Can only be used in conjunction with the roof rack provided as standard for the Audi Q5.

Ski bag

A convenient way to transport your skis. The ski bag with its premium design offers space for up to four pairs of skis or three snowboards and can be secured to the fastening rings in the luggage compartment via the integrated straps. The roller system makes it easy to carry the bag outside the vehicle.



Topic: quality

Roof rack modules



Whether it's the Kalahari, the Arctic or Florida – our roof rack modules are suited to the climate.

Weather tests simulate the different climate zones in which Audi Genuine Accessories products are used.

Hot and dry, cold and damp, hot and humid. Diverse global weather conditions present huge challenges to developers. Whether it is rainy, stormy or blazing sunshine: A product has to be able to withstand all kinds of extreme climate conditions for long periods. This is why Audi uses special weather testing to test and optimise the luggage boxes. Xenon lamps and artificial rain can simulate an entire year in fast motion. In addition, testing roof carriers also helps to optimise operating and driving comfort, for example. The desired shape of the roof carrier is based on the aerodynamic profile of aircraft wings to reduce wind noise. Multiple tests, one goal: Ensuring an ideal start to your next holiday – with Audi Genuine Accessories. Even if it doesn't take you to the Kalahari.



1

Ski and luggage boxes

Volumes	300 l	360 l	405 l
External dimensions (L x W x H)	1,902 x 630 x 376 mm	1,756 x 826 x 376 mm	2,050 x 800 x 380 mm
Max. number of pairs of skis	4-6	5-7	5-7
Max. number of snowboards	3-4	4-5	4-5
Max. length of skis	175 cm	155 cm	190 cm
Max. permissible load	60 kg	75 kg	75 kg

Bags for roof boxes

Robust yet flexible. These bags are equipped with a watertight floor featuring a watertight border extending 5 cm upwards. Ideal for making full use of the Audi roof boxes, as it is possible to use the individual bags in various combinations. Available in three sizes: S (43 l), M (76 l) and L (82 l).



1-3 Ski and luggage boxes*

A new design from Audi featuring improved aerodynamics thanks to a flatter, sportier visual concept. Available in Platinum Grey with Brilliant Black side blades or gloss Brilliant Black, each featuring chrome Audi rings and a high-quality, rivet-free look. Boxes are lockable and can be opened from both sides for comfortable loading and unloading. With internal handle for closing the box. Simple quick-action securing system including torque limitation. Positioned towards the front of the vehicle, making it easier to access the luggage compartment. Available in three sizes: 300 l (image 2), 360 l (image 3) and 405 l (image 1). Can only be used in conjunction with the roof rack provided as standard for the Audi Q5. Further important information that will help you to choose the right roof box can be found in the table on the page to the left.

4 Camping tent

Inflatable tent featuring an innovative and high-quality design with double-walled air struts – includes bag, pump, tent pegs, repair kit and two separate awnings. Sleeps two to three people. Quick and intuitive to pitch: Simply roll out the tent and inflate. Extremely stable, even when faced with wind and in different weather conditions. A weatherproof connection between the vehicle and tent is established through an optional tailor-made vehicle attachment. Can also be used without a vehicle. Further information can be found in the table on the right of the page.



Learn how to pitch and dismantle the camping tent. Simply scan the QR code and watch the video, or open the following link in your browser: www.audi.com/tentsetup. Connection costs depend on your mobile contract.

Camping tent	
Surface area	9.5 m ²
Tent height	2.18 m
Wind resistance	Up to 70 km/h
Water column	4,000 mm
Weight	13.2 kg
Package dimensions	70 x 55 x 30 cm
Sleeps	3

*Speak to your Audi partner for more precise information on the launch date for ski and luggage boxes in gloss Brilliant Black.

A communications professional who also knows where he's going.

The versatile means of communication in the Audi Q5 mean that you can take your favourite contact person as well your favourite music along with you. And with the most up to date map data for your navigation system, you can master a new route in the blink of an eye.



1 iPad adapter

Adapter for Apple iPads; secured to the backrests of the front seats. The adapters can be simply slotted onto the holder for mobile devices, which is available separately. An iPad can still be used as normal. With integrated charging function and 90° pivot. Requirement: Preparation for Rear Seat Entertainment must be present in the vehicle.

2 Audi Entertainment mobile¹

The third-generation Audi Entertainment mobile promises premium entertainment with excellent image quality thanks to the 10-inch touchscreen – and all of this in the progressive Audi design. Offering an excellent stage for videos, photos, games and music, Audi Entertainment mobile includes software that is intuitive to use, numerous connection options (SD, USB 2.0, HDMI IN etc.) and a high level of functionality. By connecting to a Wi-Fi hotspot, users can access the Internet (e.g. via Audi wireless internet access²). The device can be attached in the vehicle to the backrests of the front seats or used outside the vehicle. Requirements: holder for mobile devices and preparation for Rear Seat Entertainment.

Audi SD card

For storing your music: ultra-compact and universal SDHC memory card (16 GB), class 10. Comes with a protective case.

3 Bluetooth headset

The ideal addition to the optional Audi Entertainment mobile; compatible with various Apple products such as the iPad. The headset can be folded up and conveniently stored in the bag provided. The rechargeable batteries can achieve an operational life of up to 15 hours.

4 Audi music interface (retrofit solution and adapter cables)³

Enables various Apple iPod and iPhone models as well as other media players to be connected to your vehicle. Media players can be operated via the infotainment system. To connect media players, additional adapter cables are required, which are available in a range of versions.

Bluetooth hands-free system³

For vehicles with or without the optional MMI® navigation or MMI navigation plus, this system enables users to integrate compatible mobile phones into the vehicle architecture conveniently, quickly and wirelessly. Telephone conversations can be played back via the sound system installed ex works.



¹Speak to your Audi partner for more precise information on the launch date for this product. ²Available as a retrofit solution from Audi Genuine Accessories. ³For more detailed information, speak to your Audi partner.



*For more detailed information, please contact your Audi partner.

1 Universal mobile phone holder (plus)

For low-radiation telephony by connecting with the external aerial and to provide convenient storage of mobile phones while on the road. The mobile phone is conveniently placed in the universal mobile phone holder and automatically connects to the vehicle's external aerial, without the need for wires. Compatible with a number of popular mobile phone models. In other words, it is no longer necessary to change adapter when you switch mobile phone. A USB charging adapter, which is available separately for a number of mobile phone models, allows drivers to charge the battery of their mobile phone with ease. With the universal mobile phone holder plus, wireless charging of a mobile phone in accordance with the Qi standard is possible (if supported by your phone). Requirement: mobile phone preparation (Bluetooth).

2 Audi wireless internet access

For setting up a Wi-Fi internet connection in the vehicle. Acts as a hotspot for up to eight mobile end devices including tablets, laptops or smartphones within a range of up to 100 m – even outside the vehicle. Not constrained by battery life thanks to a router integrated into the vehicle. Offers a roaming function; also for pre-paid cards.

3 Navigation update*

Maps with advanced content, e.g. new roads and points of interest, for greater comfort and a more relaxed driving experience. Our tip: Combine the update with the next vehicle service.

Traffic information online

Colour-coordinated traffic flow information is displayed on the navigation map and is taken into account in the dynamic route guidance. A continuous data update function provides rapid information about the formation and dissipation of traffic jams, and the service also benefits from extensive coverage of the road network, including rural and urban roads. For more information, visit www.audi.com/connect.

1



2



3



Driving an Audi. Even before learning to walk.

Even if the little ones still have a few years before they are actually driving:
The child seats from Audi Genuine Accessories ensure that they have as much
fun in the car as the adults.





1 Audi child seat

Can be used in the forward or rear-facing position. With adjustable seat shell, integrated seat belt and adjustable head restraint. Can only be used in conjunction with the ISOFIX base. Suitable for children weighing between 9 and 18 kg (approx. 1 to 4 years of age).

2 ISOFIX base for the Audi baby seat and Audi child seat

A more secure fit for the Audi baby seat and the Audi child seat. Can be installed and removed quickly. The adjustable support provides better stability. Enhances the level of protection for the child. Note: The ISOFIX base is optional for the baby seat, but is mandatory for the child seat.



3 Audi child seat youngster plus

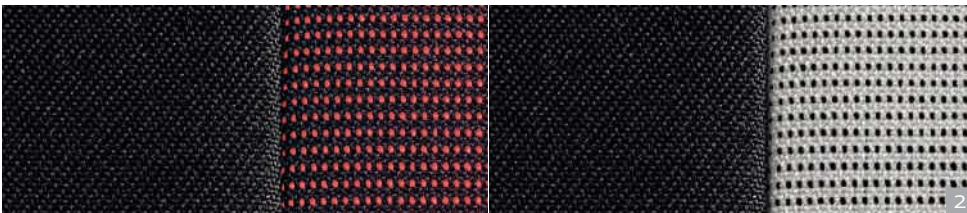
Offers a high level of comfort thanks to the intelligent seatbelt guide. The height and width of the backrest are adjustable. Adjustments to the seat size can be made with ease using a viewing panel. Suitable for children weighing between 15 and 36 kg (approx. 4 to 12 years of age).

Child seat underlay

Tailored to the design of the child seats and the interior of the vehicle. Car seats are protected against dirt and potential imprints made by the child seats. Includes two practical storage pockets. Fully compatible with all Audi child seats, even where the ISOFIX base is used.



1



2

1 Audi baby seat

Easy to fit using the ISOFIX base (recommended). Can also be secured using the three-point belt. The integrated seat belt ensures that the child is more secure; the attached cover also acts as sun protection. With adjustable head restraint. Suitable for small children up to 13 kg (approx. 12 months).

2 Child seat colour variants

All child seats are available in the colour combinations of Misano Red/Black and Titanium Grey/Black. The materials used are kind to the skin, breathable, light-resistant, removable and washable and are certified in accordance with the Oeko-Tex® Standard 100. Replacement covers are available from your Audi partner.

3 Audi baby mirror

Easy to secure to the head restraint of the rear seat thanks to the Velcro fastener, keeping the baby in the rear-facing baby seat in view. Viewing angle can be adjusted as required. Not for integrated head restraints.

4 Audi plush steering wheel and cuddly toy

For fun and games: the Audi plush steering wheel and Rob the Gecko cuddly toy. Matches the child seat designs.

Backrest protector

A practical solution to prevent the backrest of your vehicle seat from getting dirty. Easy to wash. Also prevents children damaging the seat if they kick it while travelling in the back and offers additional storage space in the form of four small pockets. Tailored to match the design of the child seats, the child seat underlay and the interior of the vehicle. Not for integrated head restraints.

Rubbish bin

A practical product for disposing of rubbish accumulated when travelling, with a waterproof interior compartment and a capacity of approx. 5 litres. Can be secured to the backrests of the front seats. Easy to clean. Standard refuse bags can also be used and secured easily inside the rubbish bin.



You have treated yourself to a very special car. Now treat the car to something as well.

Even an all-round successful vehicle like the Audi Q5 has room for improvement. Our various solutions for protection and comfort are an example. Treat your vehicle to more storage space, more protection against dirt, or a few clever details that make it even more functional.





1 Partition grille for the luggage compartment

The practical partition grilles (lengthways and transverse) enable the luggage compartment to be separated from the interior as required; the luggage compartment can also be divided down the centre. The partition grille is easy and convenient to fit – no drilling is required.

2 Luggage compartment tray

Ideal for all luggage items that tend to leave traces during transportation. The inlay is made from plastic and features high edges and a robust design; it is also easy to clean. Wide grooves prevent loads from slipping.



3 Luggage compartment shell

Made-to-measure luggage compartment protection. Robust and washable. All-round edging prevents liquids from leaking onto the luggage compartment floor.

Universal luggage compartment divider

Offers a flexible way to use the luggage compartment. Can be bent into the required shape and secured to the vehicle floor using the rip-tape fastener. Once removed, the partition system returns to its original shape. Exclusively for luggage compartment covers made from needle felt.



1



2



3

1 Espresso mobile

With a pressure of 16 bar, the Espresso mobile delivers true espresso enjoyment, complete with authentic crema. The set includes 18 illy ESE pods, two break-proof espresso cups, a microfibre cloth and an elegant case. Connection via the cigarette lighter in the vehicle interior.

2 Care products

Tailored to the high-quality materials used to construct your Audi. Suitable for numerous applications, either in the vehicle interior or for outer care, depending on the product.

3 Sun protection system

Offers virtually full sun protection. Made-to-measure two or three-part set for the side and rear windows. Easy to fit and stow away.

Wind deflectors

Enhanced interior climate and pleasant circulating fresh air: The door wind deflectors for your Audi allow the vehicle interior to be ventilated, thereby contributing to increased driving comfort – even in snow or rain. By opening the window to just above the bottom edge of the deflectors, uncomfortable heat build-up from direct sunlight becomes a thing of the past. Made from high-quality, cast acrylic glass. Available as a two-part set for the front or rear of the vehicle.

Martens defence*

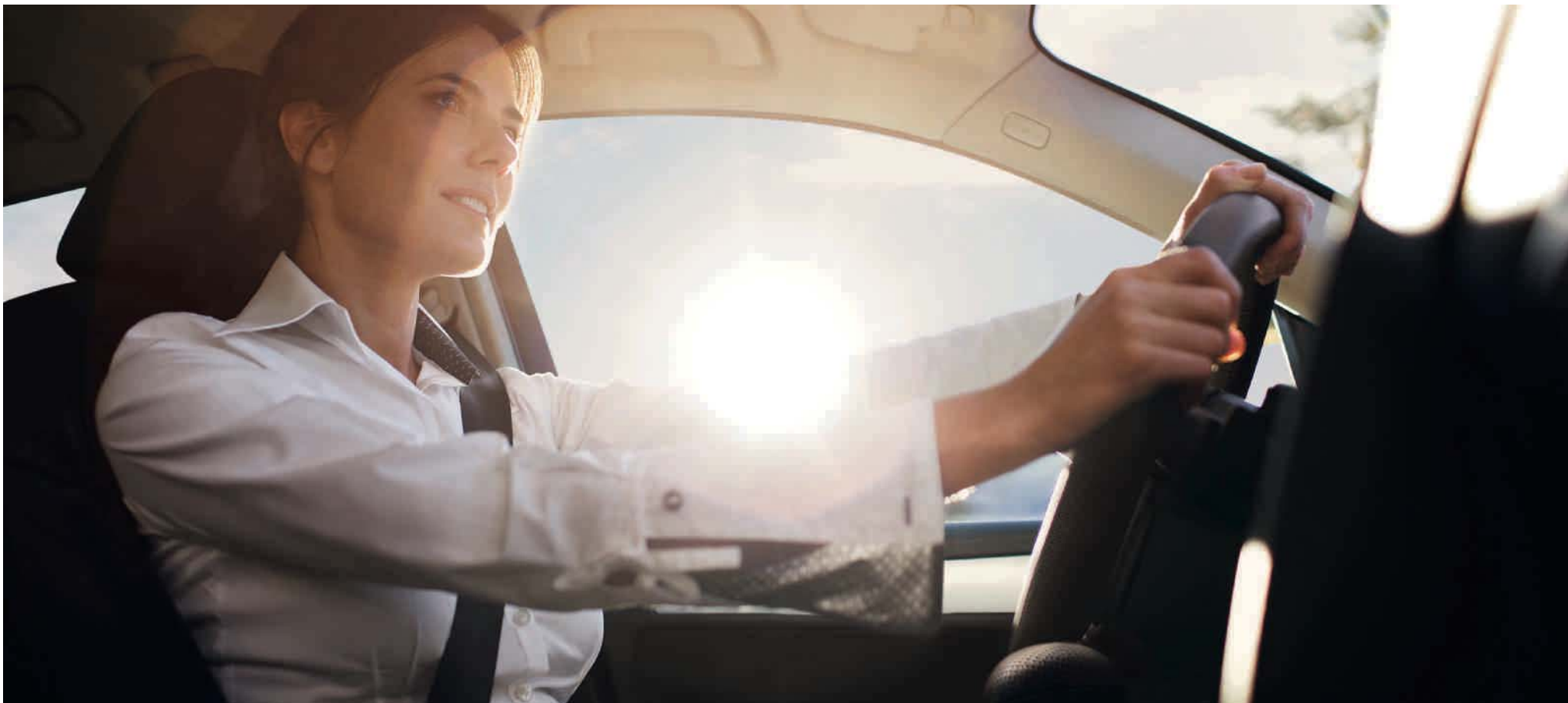
For preventing martens from making themselves comfortable in your Audi. A battery-powered, high-voltage device with double-pole stainless steel contact plates. Does not require an electrical connection to the vehicle; emits ultrasonic signals.

Retrofit solution for the parking system

Supports drivers by emitting an audible signal whenever there is insufficient distance from obstacles. Four unobtrusive ultrasonic sensors are installed in the rear bumper. Activated by selecting reverse gear.

*Speak to your Audi partner for more precise information on the launch date for this product.





Retrofit solution for the cruise control system

Keeps the required speed constant at any speed over 30 km/h.* Furthermore, an automatic brake function is available, for example when travelling downhill. The system can also be operated separately via the steering column stalk. The set speed is displayed on the multi-function display.

Luggage compartment box, foldable

Made from black polyester, offering a storage capacity of up to 32 litres. Easily assembled using Velcro tabs, providing a functional and practical solution. When laid flat, the box also acts as an additional protective underlay for the luggage compartment. Washable and easy to clean.

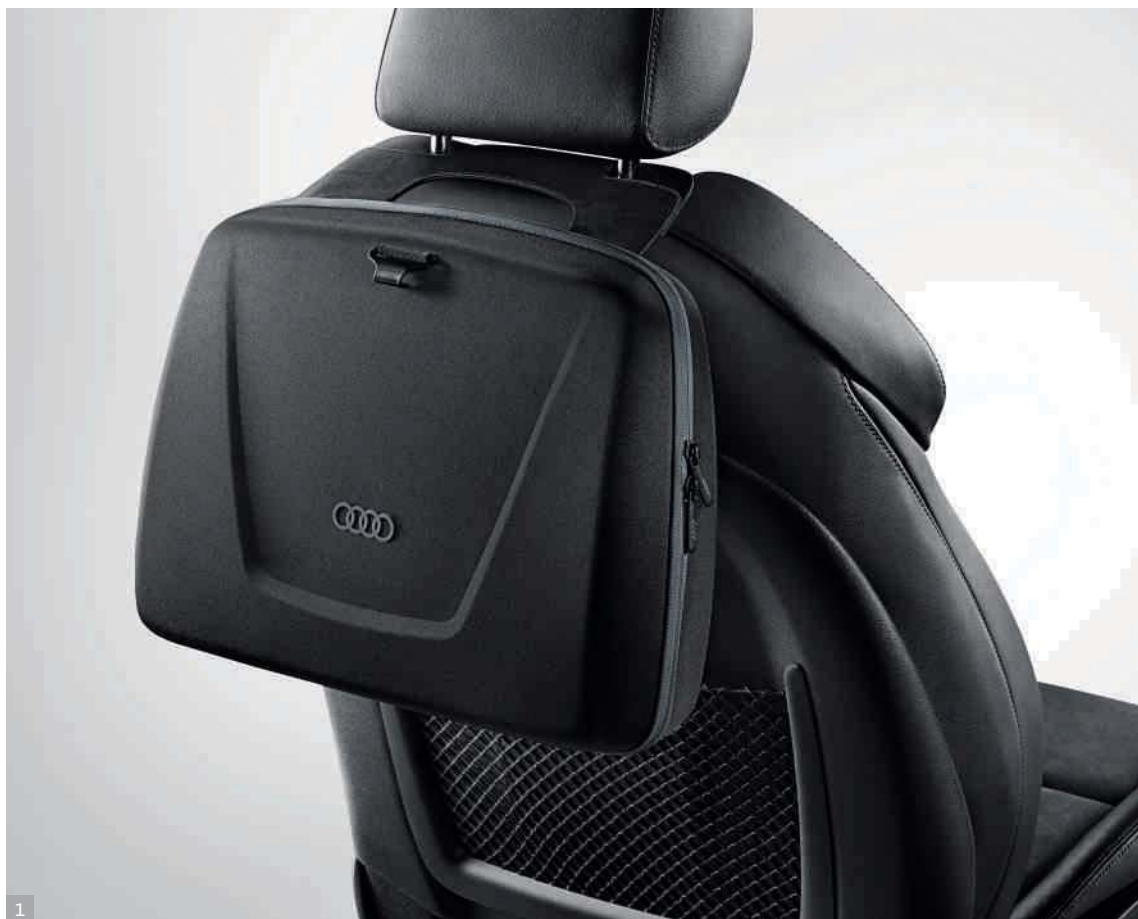
LED gooseneck reading lamp

A very bright light wherever you need it, thanks to the flexible silicone rubber neck. Ultimate stability in all positions. Connection via the cigarette lighter.

Gecko air freshener

Attaches easily to the air vents and fills the vehicle interior with a pleasant fragrance. No risk of leakage because the gecko air freshener does not contain any liquid.

*To the extent permitted by the engine performance or the engine braking action.



1 Seat back pocket

Additional storage capacity in a high-quality Audi design with various practical sections – for an even tidier interior. The pocket has a volume of approx. 11 litres and can be secured to the backrests of the front seats. The handles also enable it to be used outside the vehicle.



2 Safety harness for dogs

A dog safety belt that meets statutory regulations. Made from highly resistant materials including tear-resistant nylon and stainless-steel parts. Special padding helps to avoid pressure marks. With reflective strips in the chest area. Can also be used as a harness for use outside the vehicle.



3 Coat hanger

For coats, jackets and other items of clothing. The coat hanger is attached to the front head restraints.



4 Rear seat pocket

An organised storage space for the rear seat bench. With its various interior mesh pockets, additional storage compartment and total volume of approx. 27 litres, the rear seat pocket with its high-quality Audi design provides plenty of space for the various items required on a long journey. Easily secured using the three-point belt. Even more useful space is provided by the stable passenger compartment box and the practical business pocket (both without fig.).



Who says that shoes only play a role in the world of fashion?

Floor mats

Our testers will pay special attention to these during a special stress test.

Brakes, clutch, acceleration. Something that most drivers perform almost automatically subjects the floor mat to constant stress. This is because such movements lead to shoes placing a large amount of strain on the floor mat. As a result, Audi Genuine Accessories uses a special test procedure to investigate the durability of the materials. To do this, a floor mat is clamped in a special device. A rubber shoe heel simulates the load on the floor covering around the accelerator, brake and clutch pedals. The results are incorporated into the continuous improvement of the product. This means that, even after long use, the floor mat groove meets the high demands for quality of Audi Genuine Accessories – and, of course, your own. So you see: Shoes also play an important role at Audi. At least when it benefits your vehicle floor mats.



1

1 Rubber foot mats

Ideal fit, better protection against heavy soiling. Secured to the vehicle using the fixing points at the front on the floor. With Q5 lettering.

2 Premium textile floor mats

Tailored to the size of the floor in the Audi Q5. Made from durable, tightly woven velour. With a special coating on the underside. The floor mats are always secured at the front of the vehicle using the points provided for this purpose on the floor. With Q5 lettering.

3 Vehicle cover (for indoor use)

Ideal fit, in Anthracite, bearing the Audi logo. Made from a breathable and antistatic material. The piping accentuates the shape of the vehicle. Excellent protection from dust and dirt.



2

Vehicle cover (for outdoor use)¹

Ideal fit, in Anthracite, bearing the Audi logo. Made from a UV-resistant and washable material. Reliable protection against scratches, dirt, dust, sunlight and rain.

4 Audi Tracking Assistant plus²

Enables the tracking and tracing of a stolen vehicle in many European countries via GPS/GSM technology. With automatic driver recognition and an intelligent restart restriction function.

Mud flaps

Made from high-quality plastic. Prevent damage to paintwork and stop dirt building up in the area around the sill panel and rear apron. Available as a two-part set for the front and/or rear of the vehicle.



3

Loading sill protective sheet

The made-to-measure protective sheet for the loading sill, made from transparent film, enhances the level of protection for the bumper against damage when loading and unloading the luggage compartment.

Protective film for paintwork

Transparent, barely visible, high-performance protective film with an extra clear paint coat. Reduces the effects of stone chipping, scratches and scrapes. Applied to the front of Audi vehicles.

Protective film for rear sill panel

Practical and effective solution for protecting the kickplate of the rear doors at the wheel housing arch. Transparent film made from scratch-resistant, robust plastic.

¹ Speak to your Audi partner for more precise information on the launch date for this product. When using the vehicle cover (for outdoor use), please observe the relevant applicable legal provisions, in particular road traffic regulations. ² For more detailed information, speak to your Audi partner.







It only fits, if it fits perfectly. Discover the range of accessories by simply scanning the QR code using your smartphone or by opening the following link in your browser: www.audi.com/imagespot. Connection costs depend on your mobile contract.

Want to know more about the Q5? With pleasure.

Experience the world of the Audi Q5 at www.audi.com. Enjoy your journey of discovery.

AUDI AG
85045 Ingolstadt, Germany
www.audi.com
Valid as of June 2015

Printed in Germany
592/5100.25.18

The model variants and equipment shown in this catalogue, as well as some of the accessory items, are not available in all countries. Some of the vehicles shown here feature special equipment available at an additional cost. Individual images may show variations in colour, shape and material. Information regarding the scope of delivery, appearance, dimensions and weights of accessory items is correct at the time of printing. Subject to change.

The paper that this catalogue is made from was produced from chlorine-free bleached pulp.
Combined fuel consumption: 8.5–4.9 l/100 km; combined CO₂ emission: 199–129 g/km

